

How to Activate a new iPad



THE UNIVERSITY OF
WESTERN AUSTRALIA

Achieve International Excellence

iTunes Setup

Step 1

On your computer, open iTunes and connect your iPad to the computer

Step 2

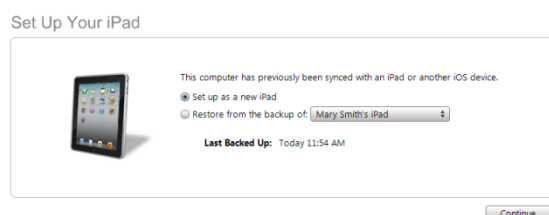
Under “Devices” in iTunes, select the iPad



Step 3

Under “Set Up Your iPad” if there are the following two options “Set up as a new iPad” and “Restore from the backup of...” select “Set up as a new iPad”

Select “Continue”



Step 4

In the “Name” field, enter a name for you iPad

The following settings are selected automatically:

- Automatically sync songs and videos to my iPad
- Automatically sync apps

Read through the options and select or unselect as required

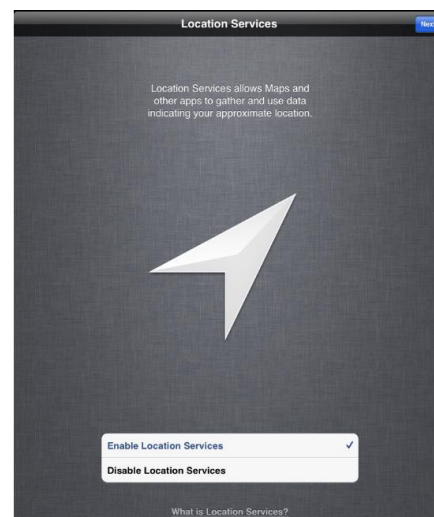
Select “Done”



Setup on the iPad

Step 1

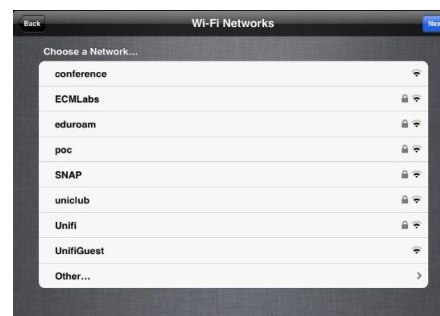
On the “Location Services” screen select “Enable Location Services” or “Disable Location Services”



Select “Next”

Step 2

On the “Wi-Fi Networks” screen, select a network to connect to



- You can choose “Next” without choosing a network. If you choose

How to Activate a new iPad



this you will need to select “Continue” on the “Continue without Wi-Fi” prompt. You won’t be able to set up the App Store, iTunes Store, iCloud and other services unless you are connected to the network



Once you choose a network, enter your “Username” and “Password” and select “Join” if prompted

Select “Next”

Step 3

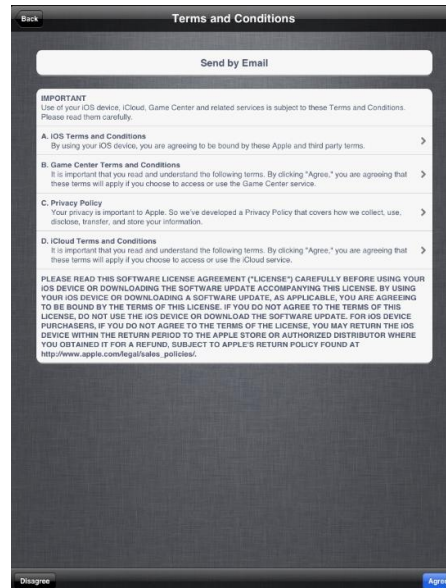
On the “Apple ID” screen, you can select to “Sign In with an Apple ID”, “Create a Free Apple ID” or “Skip This Step”



If you select “Sign In with an Apple ID” you will be prompted for your “Apple ID” and “Password” Enter these and select “Next”



On the “Terms and conditions” screen, read the terms and conditions and select “Agree”

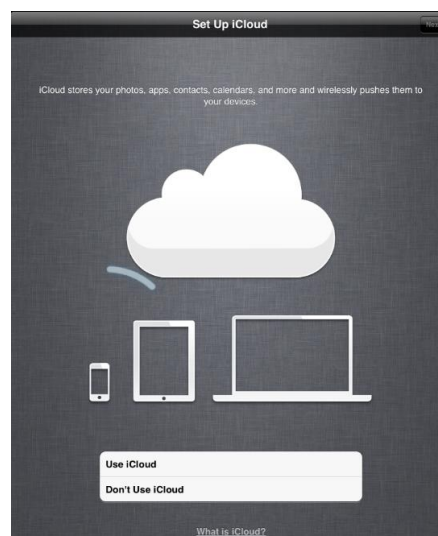


Select Agree again



Step 4

On the “Set Up iCloud” screen select either “Use iCloud” or “Don’t Use iCloud” For more information on iCloud, select “What is iCloud” at the bottom of the screen



Select “Next”

How to Activate a new iPad



THE UNIVERSITY OF
WESTERN AUSTRALIA

Achieve International Excellence

If you selected “Use iCloud” the next screen will be “iCloud Backup” Select either “Back Up to iCloud” or “Back Up to My Computer” and select “Next”

Step 5

On the “Diagnostics” screen, select “Automatically Send” or “Don’t Send”



Select “Next”

Step 6

On the “Thank You” screen, select “Start Using iPad”

