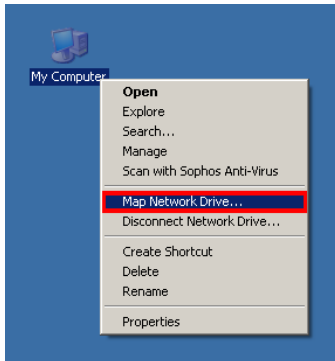




UniDrive on Windows XP

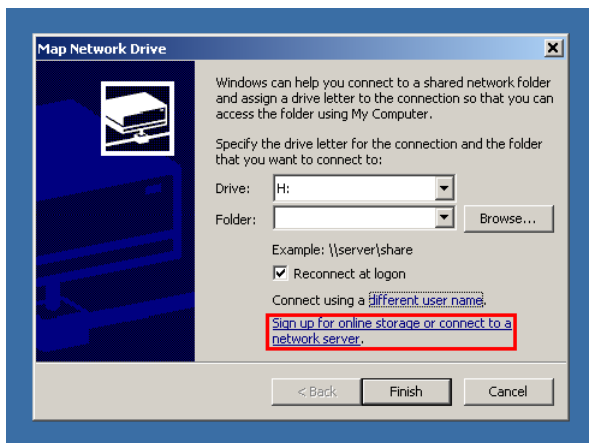
Step one

Right click **'My Computer'** and select **'Map Network Drive...'**



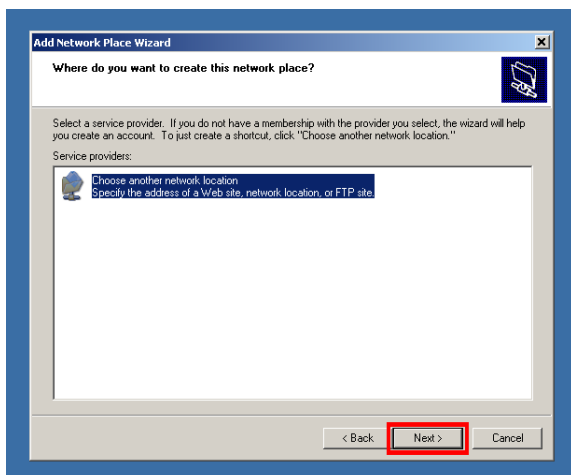
Step two

In **Map Network Drive** click **'Sign up for online storage or connect to a network server'**.



Step three

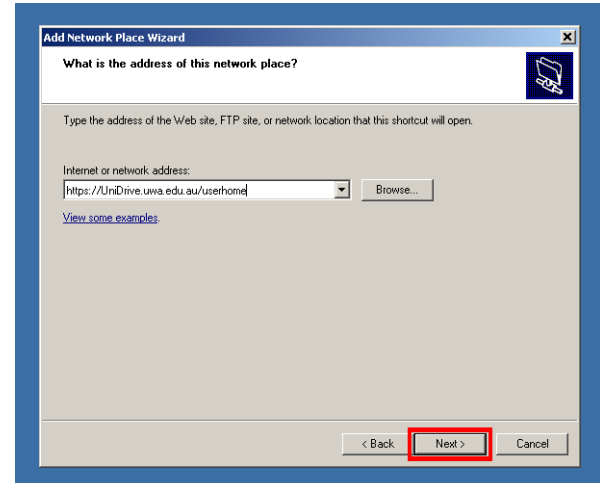
Click **'Next'** and then select **'Choose another network location'**. Click **'Next'** again.



Step four

For the Internet or network address enter:

<http://UniDrive.uwa.edu.au/userhome>

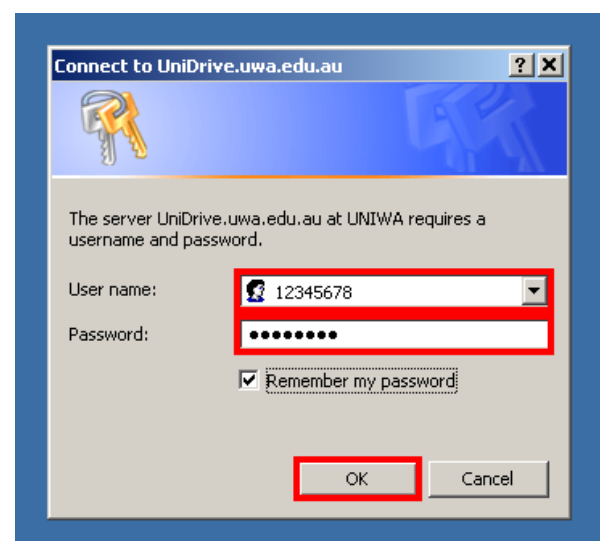


Click **'Next'**.

Step three

Enter your credentials:

- ❖ The **'User name'** is your **Student Number** (eg. 12345678).
- ❖ The **Password** is your **Pheme password**.





UniDrive on Windows XP

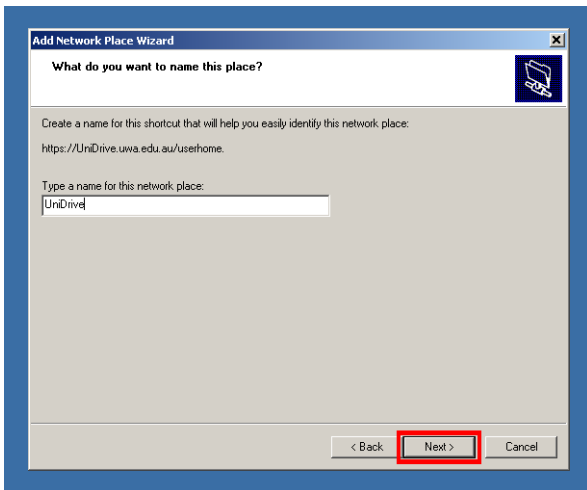
If you are using a personal computer, make sure **'Remember my password'** is ticked.

NOTE: This means that you (or anyone else using this device) will be able to access the contents of this folder without entering a password!

Click **'OK'**.

Step four

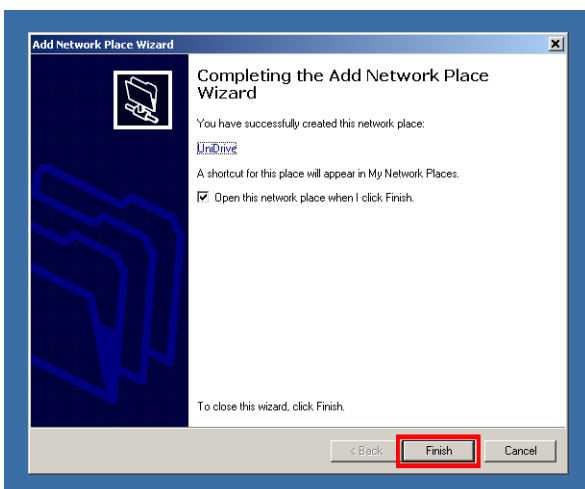
Name the network place **'UniDrive'**.



Click **'Next'**.

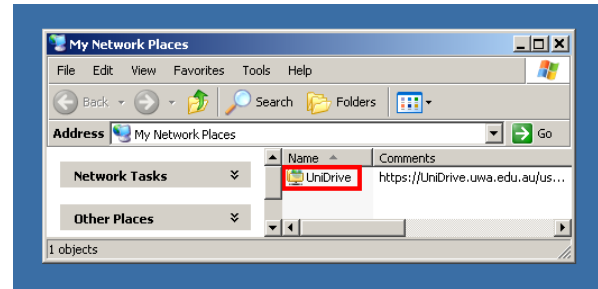
Step five

Click **'Finish'**.

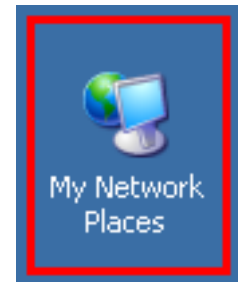


You are done!

The **Network Folder** will now launch.



You can navigate to the **Network Folder** by going to **'My Network Places'**.



Doesn't work?

Help is available! But before coming for help, please try the following:

- Double-check your student number and PHEME password are correct and have not expired.
- Double-check you are correctly enrolled in at least one unit this semester

If it still doesn't work, contact the University Library.

In person: At the information desk in your subject library

Self-service or email:

www.uwa.edu.au/askuwa

Telephone numbers at:

www.is.uwa.edu.au/contact