

# UniDrive on Mac OSX 7 & 8 Guide



THE UNIVERSITY OF WESTERN AUSTRALIA

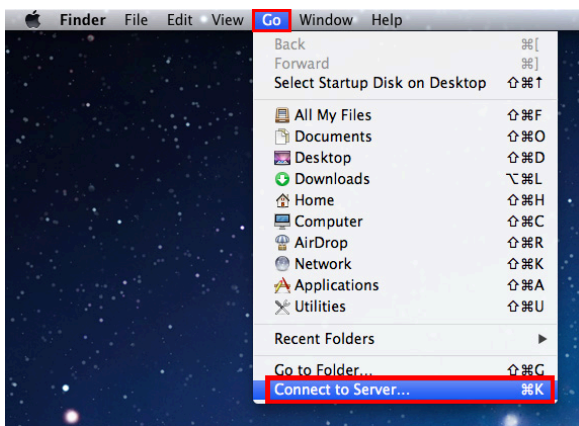
## Step one

Open Finder by clicking on the icon from the Dock.



## Step two

Select the 'Go' menu then 'Connect to server...'

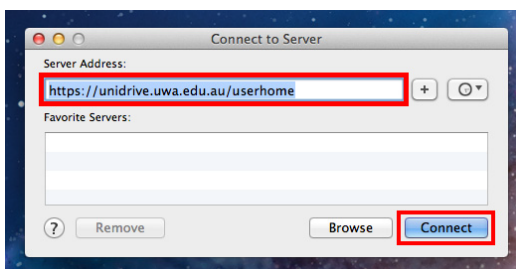


## Step three

In the 'Server Address' field, enter the URL of the server you wish to connect to.

For your Student Network Folder use:  
❖ <https://unidrive.uwa.edu.au/userhome>

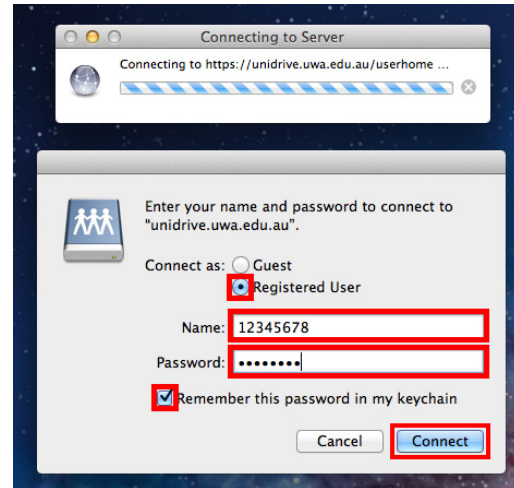
For access to other shared folders use:  
❖ <https://unidrive.uwa.edu.au/data>



Choose 'Connect'

## Step four

Next to 'Connect as:', make sure 'Registered User' is selected.



Enter in your credentials.

**NOTE:** Your 'Name' is your **student number** and your password is your **PHEME password**

If this is your personal computer, check the box for 'Remember this password in my keychain'.

**NOTE:** This means that you (or anyone else using this device) will be able to access the contents of this folder without entering a password

Choose 'Connect'

## Step five

If this is your first time connecting the 'Verify Certificate' box will pop up, click 'Show Certificate'

**NOTE:** If this isn't your first time connecting you may be able to jump to **You Are Done!** on this guide.

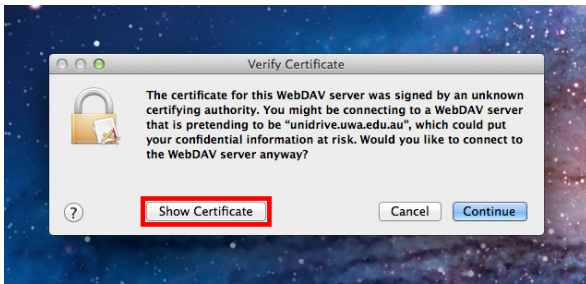
# UniDrive on Mac OSX 7 & 8 Guide



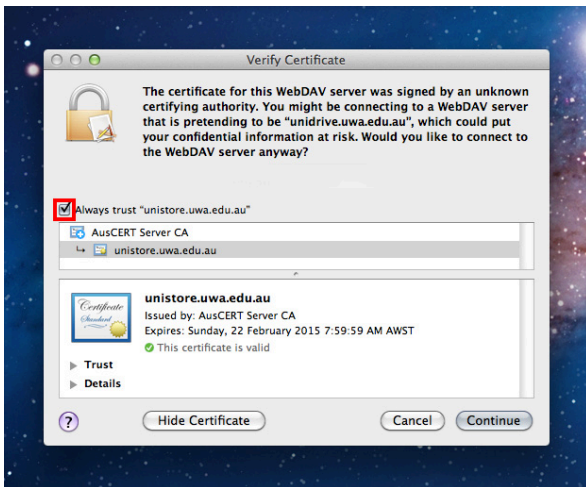
THE UNIVERSITY OF WESTERN AUSTRALIA

## You are done!

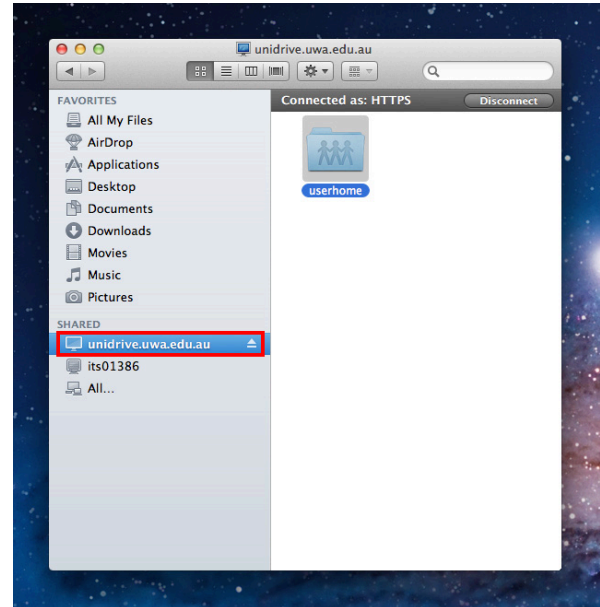
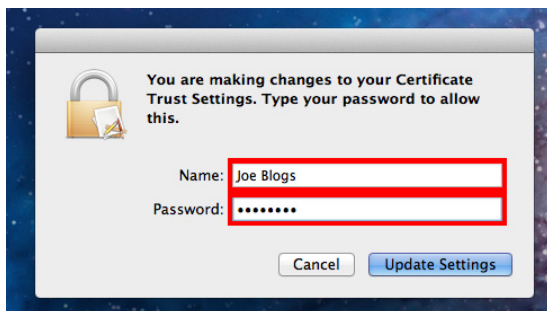
You can now navigate to your network drive in **Finder**. It will display in the left column under **'Shared'**.



Then select the check box next to **'Always trust'**.



**NOTE:** You may be prompted for your computer credentials. **'Name'** is your **computer username or name**. **'Password'** is your **computer password**.



## Doesn't work?

Try the following tips:

- Double-check your student number and PHEME password are correct and have not expired.
- Double-check you are correctly enrolled in at least one unit this semester

Still doesn't work? Help is available!  
Contact the University Library:

**In person:** At the information desk in your subject library

**Self-service or email:**  
[www.uwa.edu.au/askuwa](http://www.uwa.edu.au/askuwa)

**Telephone numbers at:**  
[www.is.uwa.edu.au/contact](http://www.is.uwa.edu.au/contact)